



Clifton rotary mixer with variable speed and a broad range of optional accessory heads available for mixing micro tubes, tubes or flasks.

The angle of mixing is fully adjustable and suitable for continuous or intermittent mixing. Bench-top or wall mountable, saving space. Can be used inside laboratory incubators up to 60°C or in cold rooms at a minimum of 4°C.

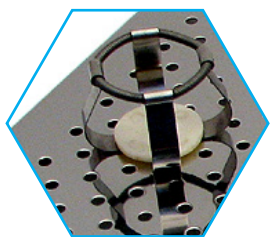
Painted body features anti-bacterial protection, hygienic coating which actively inhibits bacterial growth.

RM-2

GENERAL	
Dimensions	External: 210 x 250 x 200mm Packed: 30 x 30 x 25cm
Speed, mixing	Variable 5-30 rpm
Operating temperature	4°C to 60°C Can be used inside laboratory incubators or in cold rooms
Voltage	230V
Packed Weight	4kg

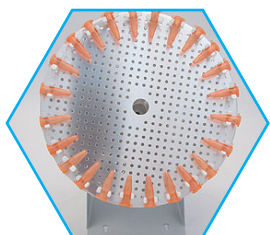
Clifton Rotary Mixers

Accessories



Flask Clip

Product Code	RM-2
Accessory Code	FC0025 : 25ml Flask Clip FC0050 : 50ml Flask Clip FC0100 : 100ml Flask Clip FC0250 : 250ml Flask Clip



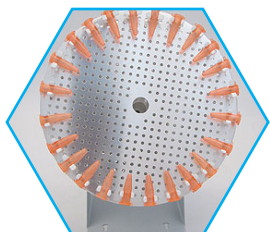
Clip for Diameter Tubes

Product Code	RM-2
Accessory Code	TC0811 : Clip for 8-11mm Diameter Tubes TC1517 : Clip for 15-17mm Diameter Tubes TC2730 : Clip for 27-30mm Diameter Tubes



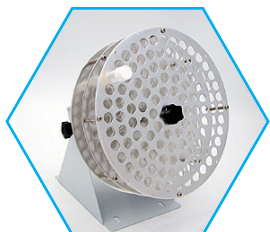
Rotary Mixer Disc

Product Code	RM-2
Accessory Code	RMD-1



Rotary Mixer Disc Complete

Product Code	RM-2
Accessory Code	RMD006 : 6 clips for tubes diameters between 25-30mm RMD012 : 12 clips for tubes diameters between 15-17mm RMD024 : 24 clips for tubes diameters between 8-11mm



Carousel for Tubes

Product Code	RM-2
Accessory Code	RMD016 : 16mm diameter RMD025 : 25mm diameter