



CM-1



CM-2

## CM-1

For rapid and efficient mixing the Cyclone creates a vortex in the tube, which gives the highly effective mixing action. Contamination from stirring rods and stoppers is eliminated and different samples may be subjected to the same degree of mixing improving repeatability of results.

## CM-2

The Cyclone+ is designed for tube, micro plate, flask and micro tube mixing using accessory platforms and cup which can be quickly interchanged. Variable speed control. When accessory platforms are fitted the unit is designed to operate at lower speeds for gentle mixing reducing damage to cell structures.

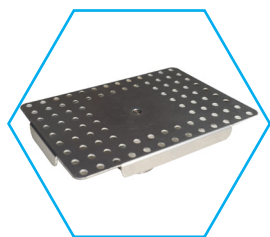
### CM-1

### CM-2

GENERAL		
Dimensions	External: 150 x 175 x 150mm Packed: 36 x 19 x 26cm	
Mixing Capacity	Accepts vessels and tubes up to 25mm diameter	
Mixing Orbit	7mm	4mm
Speed	200-2800rpm	
Packed Weight	4kg	
Voltage	230V 50/60Hz	

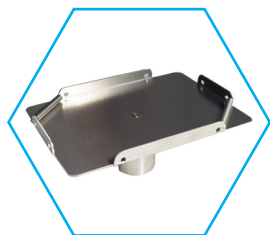
# Clifton Vortex Mixers

## Accessories



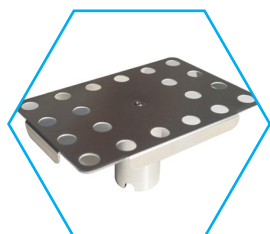
### Platform including 2 off 25ml Flask Clips

Product Code	CM-1	CM-2
Accessory Code	N/A	C1



### Platform for Microplates

Product Code	CM-1	CM-2
Accessory Code	N/A	C2



### Platform for 1.5ml Microcentrifuge tubes

Product Code	CM-1	CM-2
Accessory Code	N/A	C3



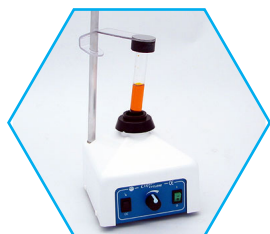
### Mixing Cup

Product Code	CM-1	CM-2
Accessory Code	BP0373	C4



### Platform for PCR Plates/Unskirted MT Plates

Product Code	CM-1	CM-2
Accessory Code	N/A	C5



### Retort Stand Assembly

Product Code	CM-1	CM-2
Accessory Code	RSA-1/CM	N/A